



# CATALOGO 2019



**TESTATE TRINCIANTI**



**TRIVELLE**



**BENNE MISCELATRICI E ORIENTABILI**

**C4 MECCANICA S.R.L.**

Zona Ind.le Madonna del Moro - 06019 Umbertide (PG)

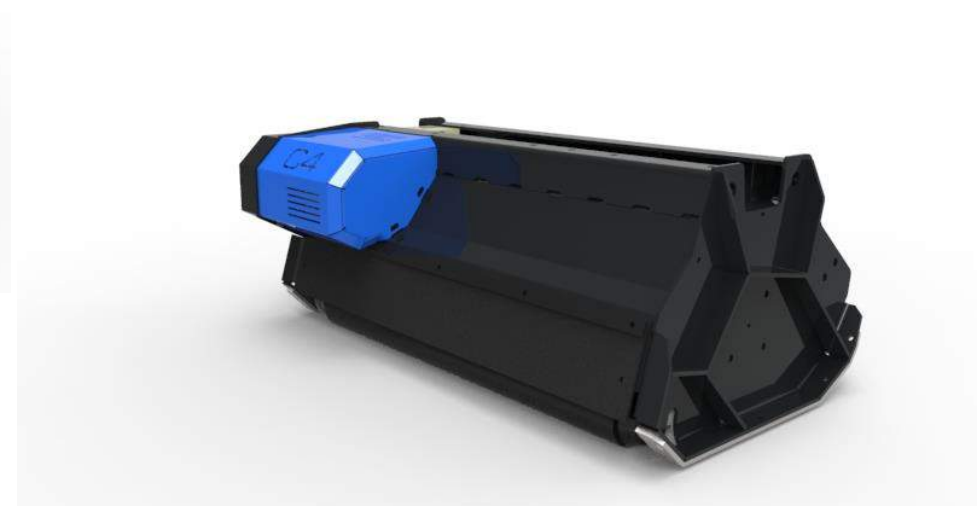
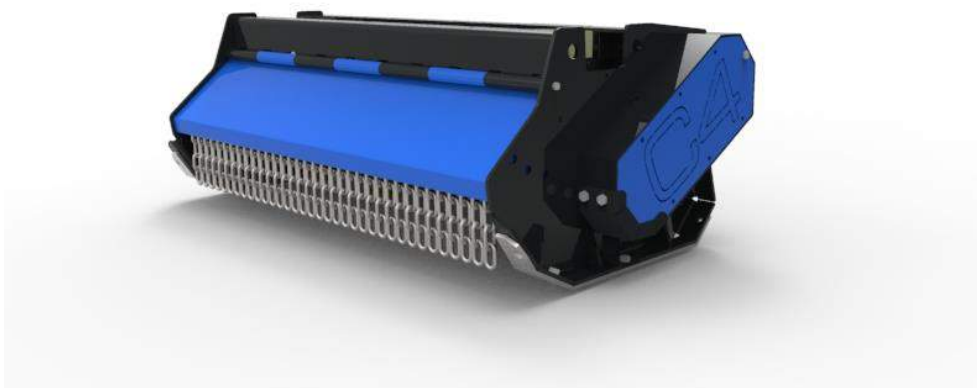


## INDICE

Testate trincianti idrauliche per escavatori .....	3
Testate trincianti idrauliche per escavatori - serie forestale.....	13
Trinciatrici idrauliche per minipale.....	19
Trivelle per escavatori.....	25
Benne miscelatrici.....	29
Benne orientabili.....	33

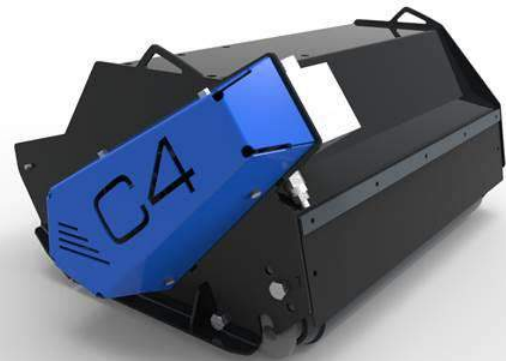


# TESTATE TRINCIANTI IDRAULICHE PER ESCAVATORI

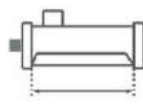




# TESTATE TRINCIANTI IDRAULICHE PER MINIESCAVATORI DA 1,5 A 5 TON.

HYDRAULIC MULCHER HEADS FOR MINI-EXCAVATORS



## MOD. A



MOD.	A	B	C	CM	N	N	L.MIN	BAR	KG
 <b>1,5 ÷ 3 ton      max cutting 2cm</b>									
A60	80	65	55	60	24	-	20-50	200	113
A80	100	65	55	80	32	-	20-50	200	123
 <b>3 ÷ 5 ton      max cutting 3,5 cm</b>									
A100	120	65	55	100	48	16	30-80	200	180



Questi Trincia sono stati progettati per essere applicati su mini escavatori con peso operativo da 1.5 a 5 ton. Si distinguono per la loro compattezza e robustezza e le alte prestazioni, anche a bassi flussi di olio.



These Mulcher heads are designed to be applied on mini-excavators with an operating weight between 1,5 and 5 ton. They stand out thanks to their compactness and firmness and high performances, even with low oil flows.

*Le illustrazioni e i dati del presente catalogo sono indicative e non vincolanti per il costruttori  
All pictures and data above are indicative only and not binding for the manufacturer*

**Complete di:**

- Attacco autolivellante
- Telaio con rinforzi interni ed esterni
- Fluid Box
- Tubi idraulici protetti da carter
- Trasmissione diretta
- Rullo di appoggio regolabile
- Protezioni in gommata antiabrasione
- Tubi idraulici (1,6m)

**Equipped with:**



- Self-leveling Joint
- Frame with internal and external reinforcements
- Fluid Box
- Hydraulic pipes case protected
- Direct Transmission
- Adjustable Roller Support
- Abrasion resistant Rubber Cloth Protections
- Hydraulic pipes (1,6m)

**Accessori:**





- Attacco standard personalizzabile

**Accessories:**

- Customizable Standard Joint

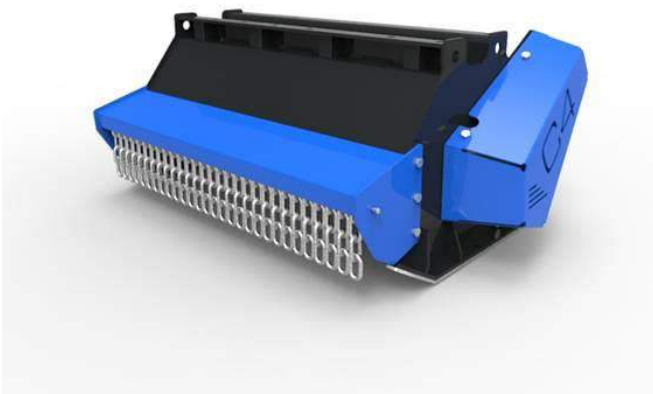
1,5 ÷ 3 ton	3 ÷ 6 ton	6 ÷ 20 ton
ATS (A)	ATS (A-B-C)	-
		

**Utensili:****Tools:**

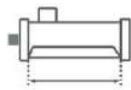
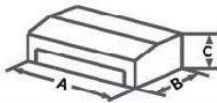
Modello Macchina Machinery Model	Coltelli Knives	Zappe Hoes
<b>A60</b>	<b>RA60</b> 	-
<b>A80</b>	<b>RA80</b> 	
<b>A100</b>	<b>RA100 C</b> 	<b>RA100 Z</b> 


# TESTATE TRINCIANTI IDRAULICHE PER MINIESCAVATORI DA 3 A 5 TON

## HYDRAULIC MULCHER HEADS FOR MINI-EXCAVATORS



### MOD. B



MOD.	A	B	C	CM	N	N	L.MIN	BAR	KG	
 <b>3 ÷ 5 ton max cutting 5cm</b>										
<b>B80</b>	105	70	62	80	36	12	30-80	230	221	-
<b>B100</b>	125	70	62	100	48	16	40-80	230	241	-



Questi Trincia sono stati progettati per essere applicati su mini escavatori con peso operativo da 3 a 5 ton. Si distinguono per la loro compattezza e robustezza e le alte prestazioni.



These Mulcher heads are designed to be applied on mini-excavators, with an operating weight between 3 and 5 ton. They stand out thanks to their compactness and firmness and high performances.

*Le illustrazioni e i dati del presente catalogo sono indicative e non vincolanti per il costruttori  
All pictures and data above are indicative only and not binding for the manufacturer*

**Complete di:**

- Attacco autolivellante
- Telaio con rinforzi interni ed esterni
- Fluid Box
- Tubi idraulici protetti da carter
- Rullo di appoggio regolabile
- Protezioni in gommata antiabrasione
- Tubi idraulici (2m)
- Slitte di appoggio con pattini antiusura sostituibili

**Equipped with:**


- Self-leveling joint
- Frame with internal and external reinforcements
- Fluid Box
- Hydraulic pipes case protected
- Adjustable Support Roller
- Abrasion resistant Rubber Cloth Protections
- Hydraulic pipes (2m)
- Skids base that prevents wear and tear

**Accessori:**

- Attacco standard personalizzabile

**Accessories:**

- Customizable Standard Joint

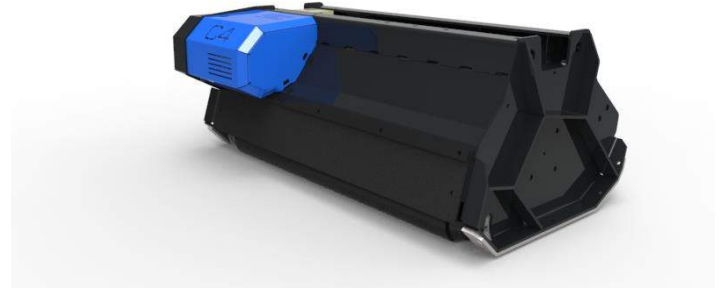
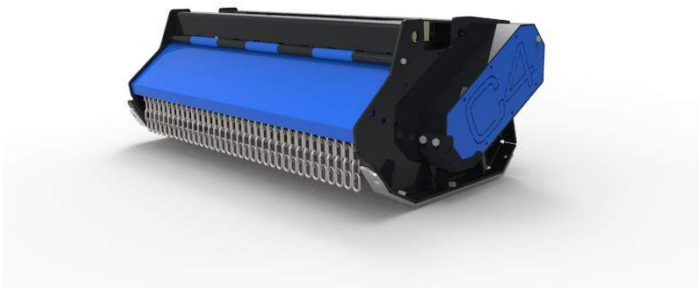
1,5 ÷ 3 ton	3 ÷ 6 ton	6 ÷ 20 ton
	ATS (A-B-C) 	-

**Utensili:****Tools:**

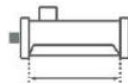
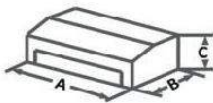
Modello Macchina Machinery Model	Coltelli Knives	Zappe Hoes
<b>B80</b>	RB80 C 	RB80 Z 
<b>B100</b>	RB100 C 	RB100 Z 


# TESTATE TRINCIANTI IDRAULICHE PER MINIESCAVATORI DA 4 A 8 TON.

HYDRAULIC MULCHER HEADS FOR MINI-EXCAVATORS



## MOD. C



MOD.	A	B	C	CM	N	N	L.MIN	BAR	KG	
 <b>4 ÷ 8 ton max cutting 6cm</b>										
<b>C90</b>	105	75	65	90	36	12	40-80	230	310	2
<b>C110</b>	125	75	65	110	48	16	40-80	230	350	2



Questi Trincia sono stati progettati per essere applicati su mini escavatori con peso operativo da 4 a 8 ton. Si distinguono per la loro compattezza e robustezza e le alte prestazioni.



These Mulcher heads are designed to be applied on mini-excavators with an operating weight between 4 and 8 ton. They stand out thanks to their compactness and firmness and high performances.

*Le illustrazioni e i dati del presente catalogo sono indicative e non vincolanti per il costruttori  
All pictures and data above are indicative only and not binding for the manufacturer*



**Complete di:**

- Attacco autolivellante
- Telaio con rinforzi interni ed esterni
- Fluid Box
- Tubi idraulici protetti da carter
- Rullo di appoggio regolabile
- Protezioni in gommata antiabrasione
- Tubi idraulici (2m)
- Slitte di appoggio con pattini antiusura sostituibili

**Equipped with:**


- Self-leveling Joint
- Frame with internal and external reinforcements
- Fluid Box
- Hydraulic pipes case protected
- Adjustable Roller Support
- Abrasion resistant Rubber Cloth protections
- Hydraulic pipes (2m)
- Skids base that prevents wear and tear

**Accessori:**

- Attacco standard personalizzabile

**Accessories:**

- Customizable Standard Joint

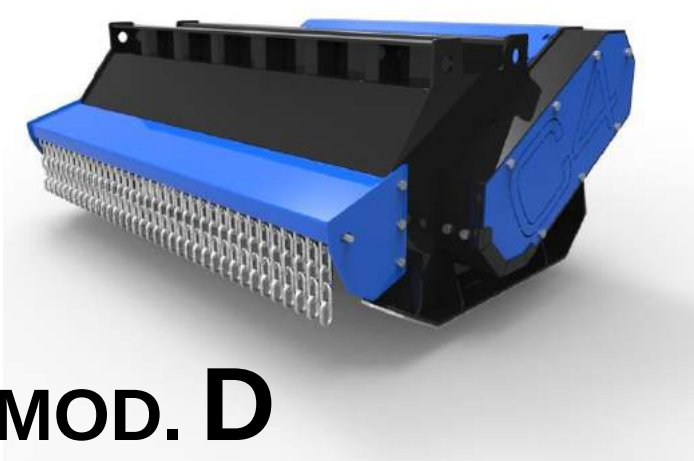
1,5 ÷ 3 ton	3 ÷ 6 ton	6 ÷ 20 ton
	ATS (A-B-C)	-
		

**Utensili:****Tools:**

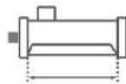
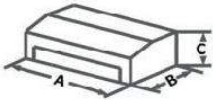
Modello Macchina Machinery Model	Coltelli Knives	Zappe Hoes
<b>C90</b>	RC90 C 	RC90 Z 
<b>C110</b>	RC110 C 	RC110 Z 


# TESTATE TRINCIANTI IDRAULICHE PER MINIESCAVATORI DA 6 A 15 TON.

HYDRAULIC MULCHER HEADS FOR MINI-EXCAVATORS



## MOD. D



MOD.	A	B	C	CM	N	N	L.MIN	BAR	KG	
 <b>6 ÷ 15 ton max cutting 7,5 cm</b>										
<b>D110</b>	135	80	75	110	36	12	60-90	250	450	3
<b>D130</b>	155	80	75	130	48	16	60-90	250	470	3
<b>D160</b>	185	80	75	160	48	16	80-130	250	530	3



Questi Trincia sono stati progettati per essere applicati su escavatori con peso operativo da 6 a 15 ton. Si distinguono per la loro compattezza e robustezza e per le alte prestazioni.



These Mulcher Heads are designed to be applied on excavators with an operating weight between 6 and 15 ton. They stand out thanks to their compactness and firmness and high performances.



### Complete di:

- Telaio con rinforzi interni ed esterni
- Fluid Box
- Tubi idraulici protetti da carter
- Rullo di appoggio regolabile
- Protezioni in gommata antiabrasione
- Tubi idraulici (3m)
- Slitte di appoggio con pattini antiusura sostituibili



### Equipped with:

- Frame with internal and external reinforcements
- Fluid Box
- Hydraulic pipes case protected
- Adjustable Roller Support
- Abrasion resistant protections
- Hydraulic pipes (3m)
- Skids base that prevents wear and tear





*Le illustrazioni e i dati del presente catalogo sono indicative e non vincolanti per il costruttore  
All pictures and data above are indicative only and not binding for the manufacturer*

**Accessori:**

- Attacco standard personalizzabile
- Attacco autolivellante
- Motore idraulico a pistoni

**Accessories:**

- Customizable Standard Joint
- Self-leveling Joint
- Piston hydraulic engine

1,5 ÷ 3 ton	3 ÷ 6 ton	6 ÷ 10 ton	10 ÷ 15 ton
-	-	ATS (D) 	ATS (D160) 
-	-	ATA (D) 	ATA (D) 

**Utensili:****Tools:**

Modello Macchina Machinery Model	Coltelli Knives	Zappe Hoes
<b>D110</b>	RD110 C 	RD110 Z 
<b>D130</b>	RD130 C 	RD130 Z 
<b>D160</b>	RD160C 	RD160 Z 



note:

---

---

---

---

---

---

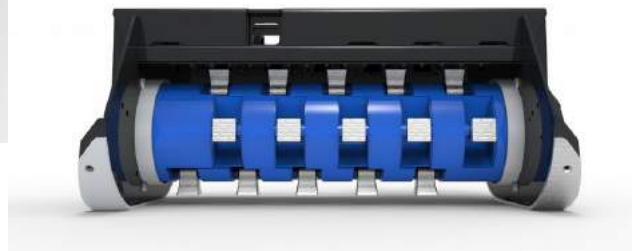
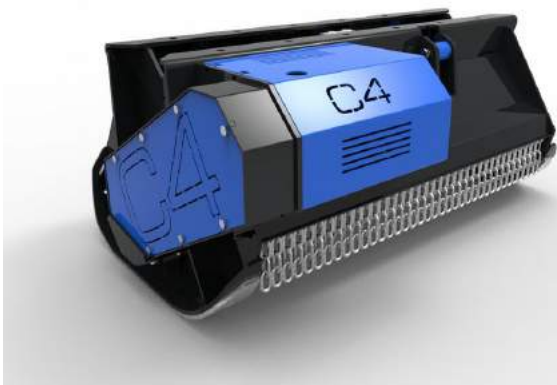
---

---

---



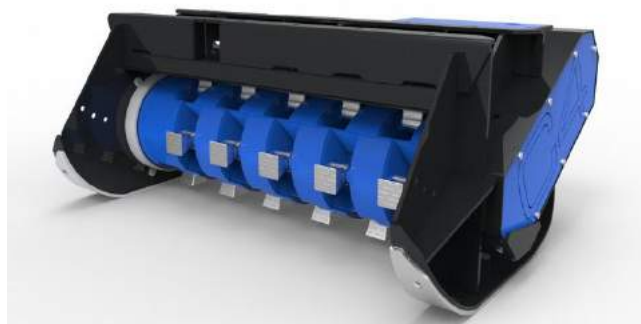
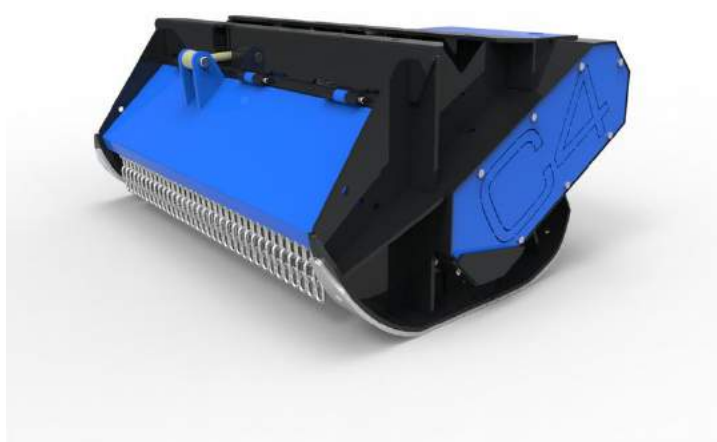
# TESTATE TRINCIANTI IDRAULICHE PER ESCAVATORI SERIE FORESTALE



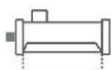
# TESTATE TRINCIANTI CON MAZZE A SCOMPARSA PER ESCAVATORI

## DA 6 A 20 TON

### HYDRAULIC MULCHER HEADS FOR EXCAVATORS FORESTRY SET



## MOD. F - FL



MOD.	A	B	C	CM	N	N	L.MIN max	BAR max	KG	
<b>5 ÷ 18 ton max cutting 10 cm</b>										
<b>FL100</b>	1300	950	610	1000	-	16	60-80	250	450	4
<b>FL130</b>	1690	970	650	1300	-	24	60-100	250	670	4
<b>FL160</b>	1980	970	650	1600	-	24	90-140	250	730	4
<b>9 ÷ 20 ton max cutting 20 cm</b>										
<b>F100</b>	1400	950	670	1000	-	20	80-130	250	605	4
<b>F130</b>	1700	970	670	1300	-	28	100-150	250	820	4



Trinciatrice Idraulica per escavatori con peso operativo da 5 a 20 ton.

Queste attrezzature sono dotate di rotore forestale con mazze a scomparsa che possono essere utilizzate per l'abbattimento di rami e alberi fino a 15 cm di diametro.



Hydraulic Mulcher Heads for Excavator with an operating weight between 5 and 20 ton.

These equipments have forestry rotor with retractable hoes that can be used to cut branches and trees up to 15 cm in diameter.

*Le illustrazioni e i dati del presente catalogo sono indicative e non vincolanti per il costruttori  
All pictures and data above are indicative only and not binding for the manufacturer*

**Complete di:**

- Telaio con rinforzi interni ed esterni
- Tubi idraulici (3m)
- Slitte di appoggio con pattini antiusura sostituibili
- Motore Idraulico con drenaggio esterno
- Cofano regolabile idraulicamente (F100-F130)
- Motore idraulico a pistoni (FL130-FL160-F100-F130)

**Equipped with:**



- Frame with internal and external reinforcements
- Hydraulic pipes (3m)
- Skids base that prevents wear and tear
- Hydraulic engine with external drainage
- Hydraulic adjustable hood (F100-F130)
- Hydraulic engine (FL130-FL160-F100-F130)

**Accessori:**












- Attacco standard personalizzabile
- Motore idraulico a pistoni
- Motore idraulico con cilindrata variabile

**Accessories:**

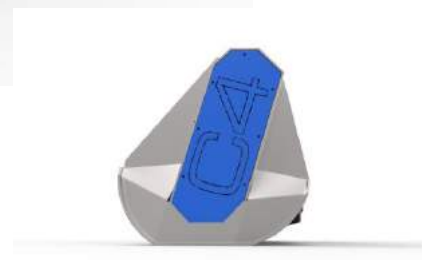
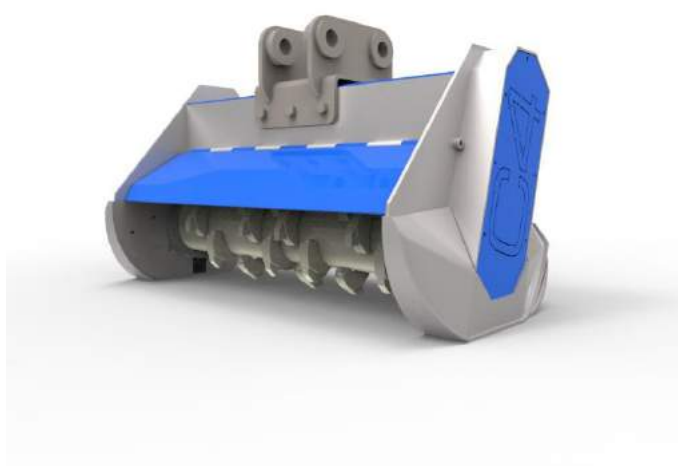
- Customizable Standard Joint
- Hydraulic Piston engine
- Hidraulic piston engine with variable displacement

5 ÷ 8 ton	9 ÷ 20 ton
<p>ATS (FL)</p> 	<p>ATS (F)</p> 

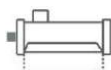
**Utensili:****Tools:**

Modello Macchina  Machinery Model			
<b>FL100</b>	RFL100 M 	RFL100 MC 	RFL100 P 
<b>FL130</b>	RFL130 M 	RFL130 P 	
<b>FL160</b>	RFL160 M 	RFL160 P 	
<b>F100</b>	RF100 M 	RF100 P 	
<b>F130</b>	RF130 M 	RF130 P 	

# TESTATE TRINCIANTI A DENTI FISSI PER ESCAVATORI DA 5 A 18 TON FLAIL HEADS FOR EXCAVATORS



## MOD. FF



MOD.	A	B	C	CM	N		L.MIN max	BAR max	KG	
<b>5 ÷ 9 ton max cutting 15 cm</b>										
<b>FF80</b>	1000	950	620	700	16		60-80	250	390	4
<b>10 ÷ 18 ton max cutting 25 cm</b>										
<b>FF130</b>	1580	830	870	1300	26		100-150	250	710	4



Trinciatrice Idraulica per escavatori con peso operativo da 5 a 18 ton.  
Queste attrezzature sono dotate di rotore forestale a utensili fissi e possono essere utilizzate per l'abbattimento di rami e alberi fino a 25 cm di diametro.



Hydraulic Mulcher Head for Excavators with an operating weight between 5 and 18 tons. These attachments have a fixed teeth rotor and they can be used to cut branches and trees up to 25 cm in diameter.

*Le illustrazioni e i dati del presente catalogo sono indicative e non vincolanti per il costruttore  
All pictures and data above are indicative only and not binding for the manufacturer*



**Complete di:**

- Telaio con rinforzi interni ed esterni
- Tubi idraulici (3mt)
- Slitte di appoggio con pattini antiusura sostituibili
- Motore Idraulico a pistoncini con drenaggio esterno
- Cofano regolabile idraulicamente

**Equipped with:**



- Frame with internal and external reinforcements
- Hydraulic pipes (3m)
- Replaceable skid with wearing undershoes
- Hydraulic engine with external drainage
- hydraulically adjustable hood

**Accessori:**







- Attacco standard personalizzabile
- Motore idraulico a pistoncini con cilindrata variabile

**Option:**

- Standard linkage customizable
- Piston hydraulic motor
- Hydraulically adjustable hood

5000 ÷ 8000 kg	9000 ÷ 20000 kg
<p><b>ATS (FL)</b></p> 	<p><b>ATS (F)</b></p> 

**Utensili:****Tools:**

Modello Macchina			
Model Machinery			
<b>FF80</b>	RFF80DL 	RFF80DP 	RFFB 
<b>FF130</b>	RFF130DL 	RFF130DP 	RFFB 



note:

---

---

---

---

---

---

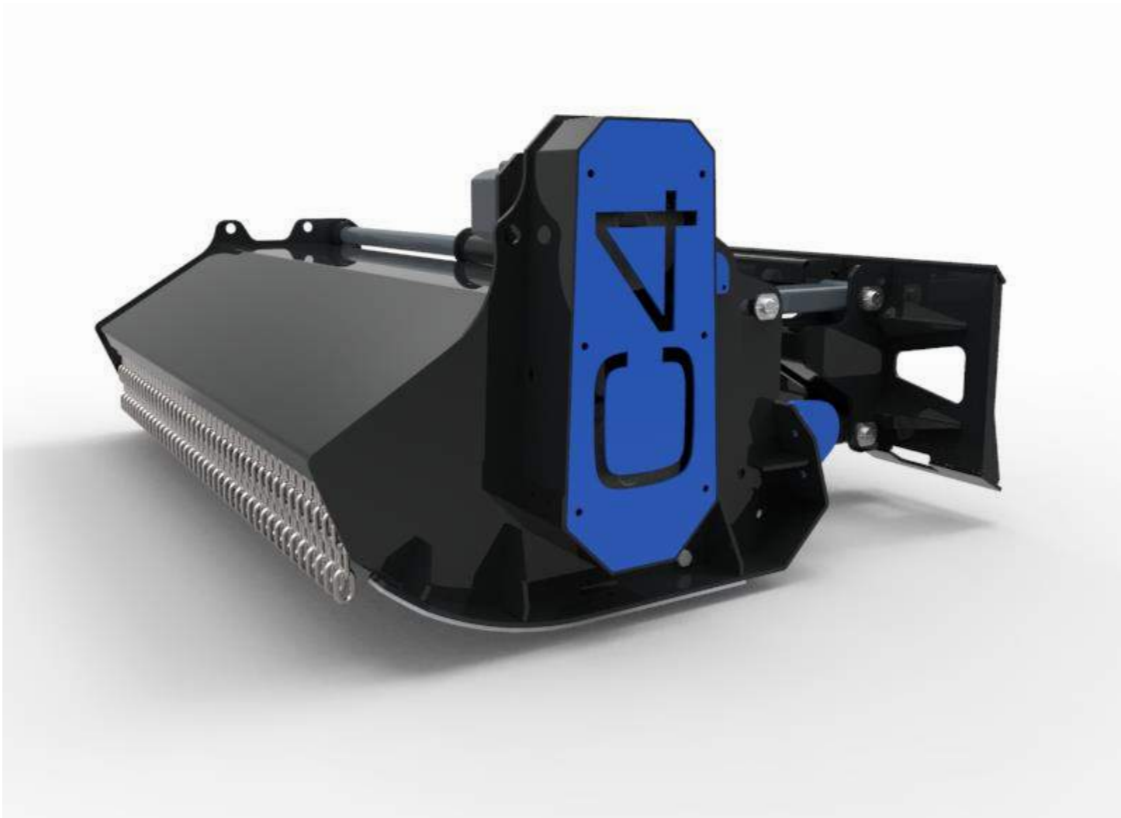
---

---

---



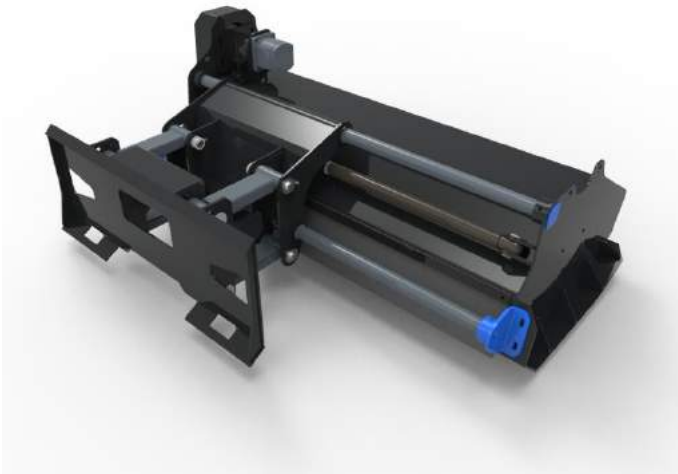
# TRINCIATRICI IDRAULICHE PER MINIPALE



# TRINCIATRICI IDRAULICHE PER MINIPALE



## HYDRAULIC MULCHER HEADS FOR SKID STEERS



MOD.	A	B	C	CM	N	N	L.MIN	BA R	KG	
<b>max cutting 7cm</b>										
DM160	189	142	76	160	48	16	70-100	220	810	4
DM190	220	142	76	190	60	20	90-120	200	860	4

*Le illustrazioni e i dati del presente catalogo sono indicative e non vincolanti per il costruttori  
All pictures and data above are indicative only and not binding for the manufacturer*

**Complete di:**

- Telaio con rinforzi interni ed esterni
- Attacco oscillante per minipala
- Rullo di appoggio regolabile
- Protezioni in gommata antiabrasione
- Slitte di appoggio con pattini antiusura sostituibili
- Traslazione idraulica

**Equipped with:**

- Frame with internal and external reinforcements
- Swinging joint for skid steer
- Adjustable Roller Support
- Abrasion resistant Rubber Cloth protection
- Skids base that prevents wear and tear
- Hydraulic translation

**Accessori:**

- Motore idraulico a pistoni
- Elettrovalvola per azionamento traslazione

**Accessories:**

- Hydraulic Piston engine

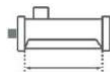
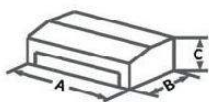
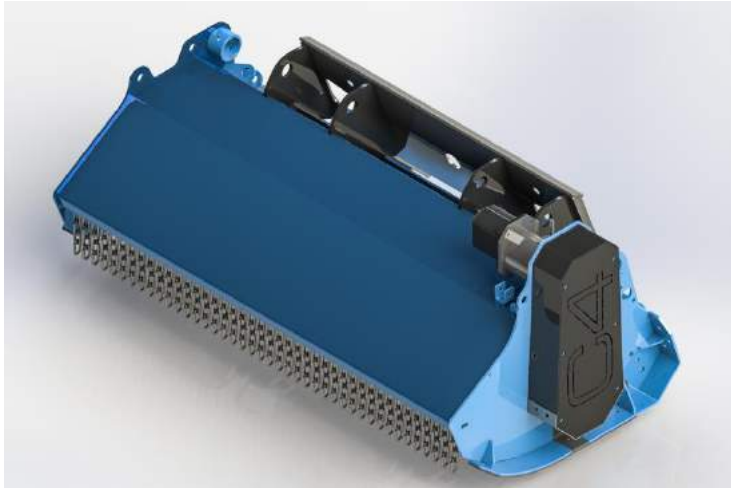
**Utensili:****Tools:**

Modello Macchina Machinery Model	Coltelli Knives	Zappe Hoes
<b>DM160</b>	RDM160C 	RDM160Z 
<b>DM190</b>	RDM190C 	RDM190Z 

# TRINCIATRICI IDRAULICHE PER MINIPALE



## HYDRAULIC MULCHER HEADS FOR SKID STEERS



MOD.	A	B	C	CM	N	N	L.MIN	BA R	KG	
<b>max cutting 7cm</b>										
<b>DM160</b>	189	142	76	160	48	16	55-100	220	565	4
<b>DM190</b>	220	142	76	190	60	20	70-120	200	610	4

*Le illustrazioni e i dati del presente catalogo sono indicative e non vincolanti per il costruttori  
All pictures and data above are indicative only and not binding for the manufacturer*

**Complete di:**

- Telaio con rinforzi interni ed esterni
- Rullo di appoggio regolabile
- Protezioni in gommata antiabrasione
- Slitte di appoggio con pattini antiusura sostituibili

**Equipped with:**

- Frame with internal and external reinforcements
- Adjustable Roller Support
- Abrasion resistant Rubber Cloth protection
- Skids base that prevents wear and tear

**Accessori:**

- Motore idraulico a pistoni

**Accessories:**

- Hydraulic Piston engine

**Utensili:****Tools:**

Modello Macchina Machinery Model	Coltelli Knives	Zappe Hoes
<b>DML160</b>	RDML160C 	RDML160Z 
<b>DML190</b>	RDML190C 	RDML190Z 

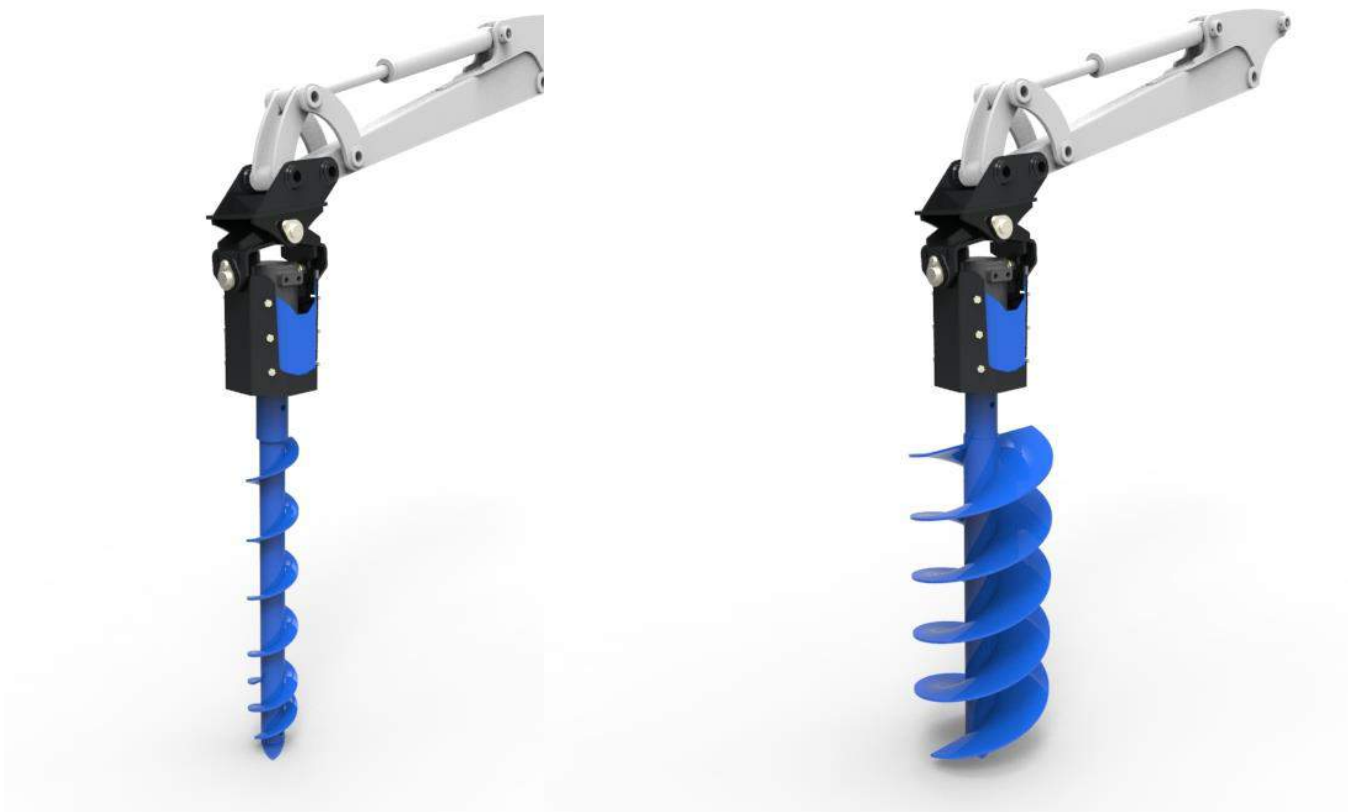


note: \_\_\_\_\_  
\_\_\_\_\_  
\_\_\_\_\_  
\_\_\_\_\_  
\_\_\_\_\_  
\_\_\_\_\_  
\_\_\_\_\_





# TRIVELLE PER ESCAVATORI



# TRIVELLE PER ESCAVATORI



## DRILLS FOR EXCAVATORS



Trivelle Idrauliche per escavatori da 1,5 a 8,0 ton  
Hydraulic Drills for excavators from 1,5 to 8,0 ton.



Attrezzature adatte alla creazione di fori sia su terreno che su roccia grazie alle due tipologie di punte disponibili.

Possibilità di utilizzo su escavatori e minipale (utilizzando l'apposito adattatore).

La trivella è dotata di un doppio snodo che permette di effettuare perforazioni perpendicolari in ogni condizione di pendenza.

A differenza degli altri prodotti attualmente disponibili sul mercato, queste trivelle sono in grado di eseguire perforazioni anche in orizzontale.



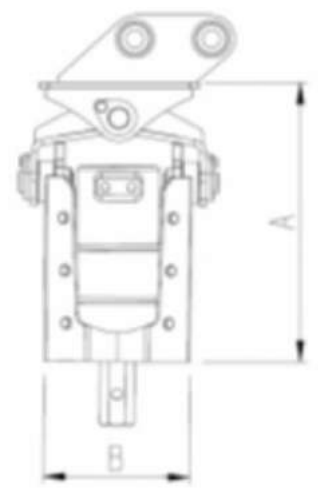
Equipment suitable to make holes both on the ground and on the rock thanks to the two types of bits available .

They can be used on excavators and skid steers ( using an adapter ) .

The drill is provided with a double junction that allows to make perpendicular perforations in every kind of slope.

Unlike other products currently available on the market , these drills can work horizontally too..

Escavatore	ton	1,5-1,8	1,8-4,0	4,0-8,0
modello		<b>T15</b>	<b>T20</b>	<b>T50</b>
A	mm	475	600	720
B	mm	250	300	300
Coppia di lavoro	n/m	1500	2500	5000
Peso	kg	80	135	172
Portata olio	lt/min	20/40	30/60	45/80
Pressione lavoro	bar	160	180	200
Cilindrata	cc	125	200	250



Punta Standard esagono 50 lunghezza 1000mm		Punta Roccia esagono 50 lunghezza 1000mm		Punta Fresa Ceppi esagono 50		Prolunga con Elica lunghezza 1000mm	
PS100	Ø 100	PR100	Ø 100	-	-	PRLTE100	Ø 100
PS150	Ø150	PR150	Ø150	PFC150	Ø150	PRLTE150	Ø150
PS200	Ø200	PR200	Ø200	PFC200	Ø200	PRLTE200	Ø200
PS250	Ø250	PR250	Ø250	PFC250	Ø250	PRLTE250	Ø250
PS300	Ø300	PR300	Ø300	PFC300	Ø300	PRLTE300	Ø300
PS350	Ø350	PR350	Ø350	PFC350	Ø350	PRLTE350	Ø350
PS400	Ø400	PR400	Ø400	PFC400	Ø400	PRLT400	Ø400
PS500	Ø500 no T15	PR500	Ø500 no T15	PFC500	Ø500 no T15	PRLTE500	Ø500 no T15

PRLT	prolunga	1000mm
------	----------	--------



ADMT	Adattatore per Minipala
------	-------------------------



PCS	Punta Conica per Spaccalegna
-----	------------------------------





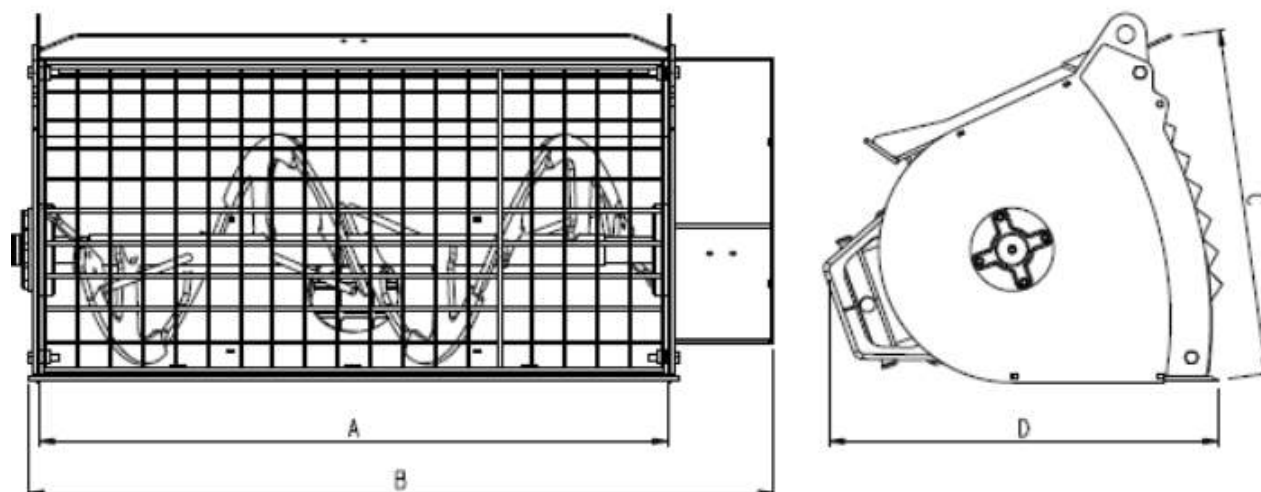
note: \_\_\_\_\_  
\_\_\_\_\_  
\_\_\_\_\_  
\_\_\_\_\_  
\_\_\_\_\_  
\_\_\_\_\_  
\_\_\_\_\_



# BENNE MISCELATRICI



# BENNE MISCELATRICI



Modello		BM150	BM200	BM250	BM350	BM450
A	mm	1000	1250	1250	1350	1650
B	mm	1260	1490	1490	1590	1890
C	mm	560	560	620	730	730
D	mm	630	630	730	840	840
PESO	kg	200	310	350	450	510
PESO PIENO CARICO	kg	500	780	930	1250	1500
CAPACITA' A RASO COCLEA	litri	150	200	250	350	450
PRESSIONE MAX	bar	140	140	140	140	140
TRASMISSIONE	tipo	RIDUTTOR E	RIDUTTORE	RIDUTTORE	RIDUTTORE	RIDUTTORE



Le Benne Miscelatrici C4 possono essere applicate a qualsiasi tipo di macchina movimento terra così da poter essere utilizzate con vari tipi di impiego. Grazie al particolare scivolo di scarico, al contrario del tradizionale tubo flessibile, è possibile l'utilizzo in sicurezza.



C4 Mixing Buket can be applied to any type of earth moving machine so it can be used for various uses. Thanks to the particular discharge chute, in contrast to the traditional flexible pipe, it is possible a safe use.

**Complete di:**

- Apertura bocchetta idraulica
- griglia di protezione fissa
- motore idraulico con trasmissione a riduttore
- vasca in materiale hardox antiusura

**Equipped with:**

- Hydraulic opening nozzle
- Protective fixed grill
- Hydraulic engine with reduction gear transmission
- tub made of the anti wear material "hardox"

**Accessori:**

- Attacco standard personalizzabile per escavatori
- Tubi Flessibili per scarico

**Accessories:**

- Customizable Standard Joint for excavators
- 

<b>ATS(BM)</b>	Attacco standard personalizzabile per escavatore
----------------	--------------------------------------------------



<b>TBF</b>	Tubi Flessibili per Scarico
------------	-----------------------------



note: \_\_\_\_\_  
\_\_\_\_\_  
\_\_\_\_\_  
\_\_\_\_\_  
\_\_\_\_\_  
\_\_\_\_\_  
\_\_\_\_\_





# BENNE ORIENTABILI





MODELLO	A	B	RS mm	P. Max bar	Kg.	C.SAE
<b>per escavatori da 1,2 - 1,8 TON.</b>						
<b>BO35-800</b>	800	350	520	150	75	70
<b>BO35-1000</b>	1000	350	520	150	84	89
<b>BO35-1200</b>	1200	350	520	150	94	109
<b>per escavatori da 1,8 - 2,8 TON.</b>						
<b>BO37-1050</b>	1050	370	615	250	143	118
<b>BO37-1200</b>	1200	370	615	250	152	137
<b>BO37-1400</b>	1400	370	615	250	166	161
<b>per escavatori da 3,0 - 3,5 TON.</b>						
<b>BO42-1050</b>	1050	420	660	250	152	148
<b>BO42-1200</b>	1200	420	660	250	163	172
<b>BO42-1300</b>	1300	420	660	250	184	187
<b>BO42-1400</b>	1400	420	660	250	177	203
<b>per escavatori da 3,5 - 5,0 TON</b>						
<b>BO46-1200</b>	1200	460	700	250	186	195
<b>BO46-1300</b>	1300	460	700	250	194	220
<b>BO46-1400</b>	1400	460	700	250	202	231
<b>BO46-1500</b>	1500	460	700	250	210	246
<b>BO46-1600</b>	1600	460	700	250	210	248
<b>per escavatori da 5,0 - 8,0 TON.</b>						
<b>BO52-1250</b>	1250	520	795	300	275	260
<b>BO52-1400</b>	1400	520	795	300	391	295
<b>BO52-1500</b>	1500	520	795	300	300	318
<b>BO52-1600</b>	1600	520	795	300	311	341
<b>BO52-1700</b>	1700	520	795	300	349	350
<b>BO52-1800</b>	1800	520	795	300	357	357

## Benne Orientabili per Escavatori Directable Buckets for Excavators



Gamma completa di Benne Orientabili per escavatori da 1.2 a 8.0 ton.  
Struttura rinforzata con ampia orientabilità fino a 45° per lato



Full selection of Directable Buckets for excavators between 1,2 and 8,0 ton.  
Reinforced structure and ample adjustability until 45° for each side





The logo features the letters 'C4' in a light blue, sans-serif font. The 'C' is a simple open circle, and the '4' is a solid numeral. The text is centered within a white circle. Surrounding this central circle are several concentric, curved bands in shades of light green and light red, creating a dynamic, swirling effect.

C4

**C4 MECCANICA S.R.L.**

Zona Ind.le Madonna del Moro - 06019 Umbertide (PG)

**[www.c4meccanica.it](http://www.c4meccanica.it)**

  C4 Meccanica

Tel. 075 941 59 98 - ☎ 327 533 50 88 - Fax 075 941 64 10  
info@c4meccanica.it - amministrazione@c4meccanica.it